



Solar Heating

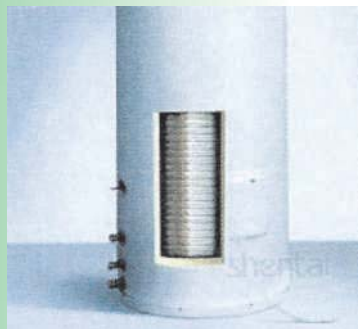
split pressurized system: SFCY-01



Collector



Pressurized tank



Working station

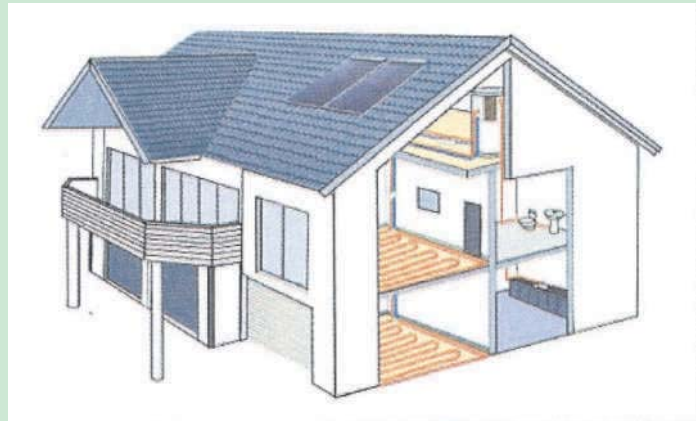


Shentai split pressurized solar water heater is specially designed for the villa.

The split means that the collector separates from water storage tank. Collector maybe installed either on the roof or wall while water tank may be installed at any place in a villa flexible. Collector harmonizes with villa's outlook and maintains villa's outlook beauty.

Working Principle:

The collector absorbs solar energy and transmits it to the water tank through circulation. When the temperature of the collector reaches the set value, the controller starts the circulation pump automatically



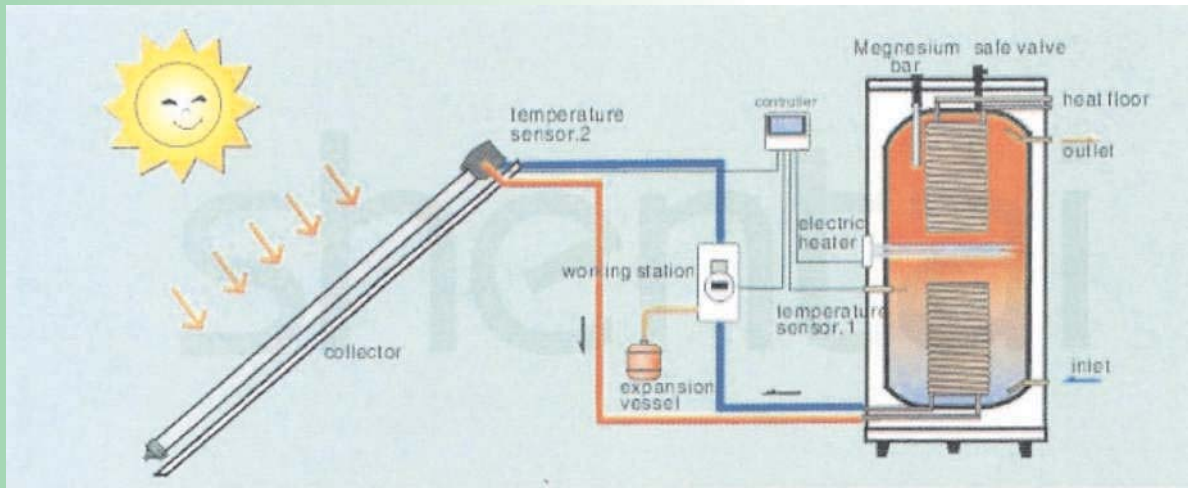
Feature:

- Module design, arbitrary combination, harmony with the building perfectly;
- Intelligent control and automatic operation
- Anti-freeze: Using the anti-freezing liquid as the medium and the controller has the anti-freezing function
- multifunction: bathing, washing, domestic heating etc ;



Specifications:

- The whole system is mainly combined by pressurized collector, pressurized storage tank, solar working stations, controller.
- Pressure: 6 Bar
- Daily efficiency: >55% (>42% in winter)
- Heat preservation: 72h - 80h
- Electric heater: 1.5Kw-3Kw
- Heat Pipe: anti-freezing > -35 °C



SFCY-01 Technical Data

Model Name	Collector Model	Collector	Absorber Area	Tank Capacity	Persons
SFCY-01-150-15	SCM15-58/1800	1 Pc	1.92m ²	150L	1 ~ 2
SFCY-01-150-20	SCM20-58/1800	1 Pc	2.57m ²	150L	1 ~ 2
SFCY-01-200-20	SCM20-58/1800	1 Pc	2.57m ²	200L	1 ~ 3
SFCY-01-200-24	SCM12-58/1800	2 Pc	3.06m ²	200L	1 ~ 3
SFCY-01-300-30	SCM15-58/1800	2 Pc	3.84m ²	300L	2 ~ 5
SFCY-01-300-36	SCM12-58/1800	3 Pc	4.59m ²	300L	2 ~ 5
SFCY-01-300-40	SCM20-58/1800	2 Pc	5.14m ²	300L	2 ~ 5
SFCY-01-500-60	SCM20-58/1800	3 Pc	7.71m ²	500L	3 ~ 7
SFCY-02-150-30	SCM15-47/1500	2 Pc	2.74m ²	150L	1 ~ 2
SFCY-02-200-40	SCM20-47/1500	2 Pc	3.68m ²	200L	1 ~ 3
SFCY-02-300-60	SCM20-47/1500	3 Pc	5.49m ²	300L	2 ~ 5

split pressurized system: YFCY-01



Feature:

- We can design standard water heating systems integrating solar energy technology
- with architecture design.

Specifications:

- The whole system is mainly combined by pressurized collector, pressurized storage tank, solar working stations, controller.
- Pressure: 6 Bar
- Daily efficiency: > 55%
- Heat preservation: 72h - 80h
- Electric heater: 1.5Kw-3Kw
- Heat Pipe: anti-freezing > -35 °C

YFCY-01 Technical Data

Model Name	Collector Model	Collector	Absorber Area	Tank Capacity	Persons
YFCY-01-100-30	SCM30-58/850H	1 Pc	1.68m ²	100L	1 ~ 2
YFCY-01-150-35	SCM35-58/850H	1 Pc	1.96m ²	150L	2 ~ 3

pre-heated pressure system: DAC-E / A8C-E / WAC-E

DAC-E



A8C-E

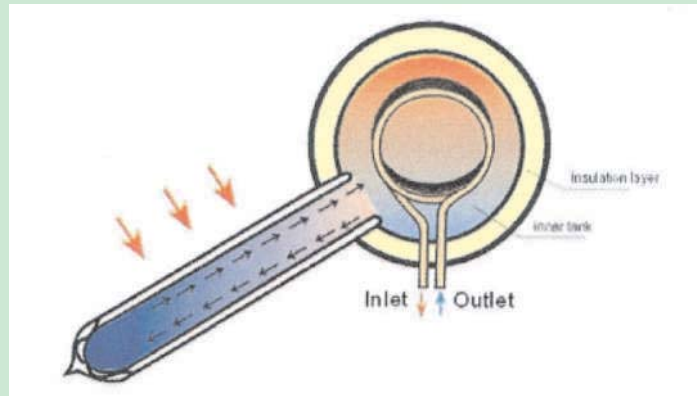


WAC-E



Advantages:

One copper coil is installed inside the tank as the heat exchanger. When water flows into the copper coil, it absorbs the heat of the water in the tank via the copper coil therefore the water tank is just a heat storage tank.



Feature:

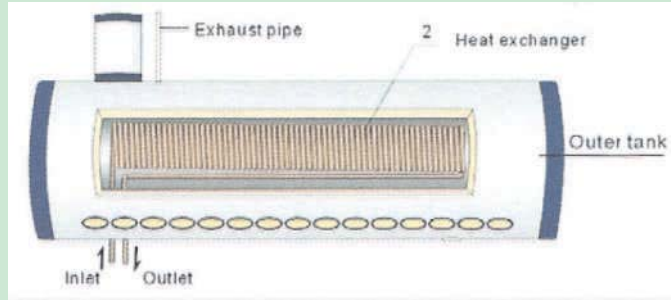
- Use in any time: It adopts advanced design idea and integrates with high efficiency preheated patent technique, so it can warm the cold water rapidly when it flows through special pipe. It can overcome the short of traditional SWH, such as slow heating, long waiting time.
- More Capacity: We adopt special exchanging heat mode, it avoids mixed effect, so cold water can be heated at any moment.
- Strong hydraulic pressure: The hydraulic pressure is same as tap water, it is very suitable for tired person.
- Economical and Environmental protecting: There is no pollution when it is working since it depends on sunshine. Green and economical.
- Easy operation: It can supply water automatically, you can take it easy and enjoy good time.
- Fashionable : The appearance is fashionable and it can great integrate with your fitment.





Specifications:

- Tank material: interior SUS 304-2B
Outer: PVDF / Color steel
- Frame: A8C-Aluminum alloy , DACIWAC- Galvanized steel
- Heat exchanger: Red copper
- Pressure: 6 Bar
- Heat preservation: 72-80h
- Hail resistance: 25mm



DAC-E / A8C-E / WAC-E Technical Data

Model Name	Tube Specification	Tube Coating	Absorber Area	Tank Capacity	Persons
DAC-210E	Φ58mm * 1900mm*21	ALN/AIN-SS/CU	2.82m ²	210L	1 ~ 2
DAC-240E	Φ58mm * 1900mm*24	ALN/AIN-SS/CU	3.21m ²	240L	2 ~ 3
DAC-300E	Φ58mm * 1900mm*30	ALN/AIN-SS/CU	4.02m ²	300L	2 ~ 5
DAC-360E	Φ58mm * 1900mm*36	ALN/AIN-SS/CU	4.83m ²	360L	3 ~ 6
A8C-210E	Φ58mm * 1800mm*21	AL-N-AL	2.63m ²	210L	1 ~ 2
A8C-240E	Φ58mm * 1800mm*24	AL-N-AL	3.03m ²	240L	2 ~ 3
A8C-300E	Φ58mm * 1800mm*30	AL-N-AL	3.80m ²	300L	2 ~ 5
A8C-360E	Φ58mm * 1800mm*36	AL-N-AL	4.56m ²	360L	3 ~ 6
WAC-210E	Φ58mm * 1800mm*21	AL-N-AL	2.63m ²	210L	1 ~ 2
WAC-240E	Φ58mm * 1800mm*24	AL-N-AL	3.03m ²	240L	2 ~ 3
WAC-300E	Φ58mm * 1800mm*30	AL-N-AL	3.80m ²	300L	2 ~ 5

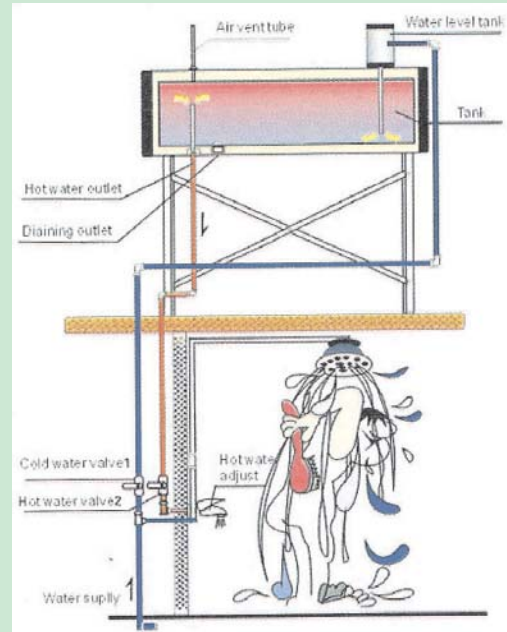
*Heat pipe can be used in for the above models, DAC-EH,A8C-EH,WAC-EH will be their model. name

Compact non-pressure: ST

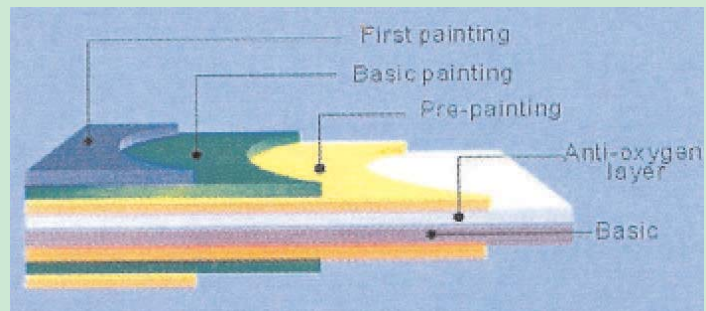


Feature:

- Super Anti-erode outer tank: Outer tank is made by PVDF. Best anti-erode material. Especially for the seaside area, such as East South Asia etc.
- Feeding water automatic: With special design, feeding water, automatic, and ensure the outlet water as stable temperature.



PVDF structure



Specifications:

- Tank material: interior SUS 304-2B
Outer: PVDF / Color steel
- Frame: Aluminum alloy / Galvanized steel
- Heat preservation: 60-72h
- Hail resistance: 25mm

ST Technical Data

Model Name	Tube Specification	Tube Coating	Absorber Area	Tank Capacity	Persons
ST16-150	Φ47mm * 1500mm*16	AL-N-AL	1.52m ²	90L	1 ~ 2
ST18-150	Φ47mm * 1500mm*18	AL-N-AL	1.65m ²	110L	1 ~ 2
ST24-150	Φ47mm * 1500mm*24	AL-N-AL	2.16m ²	150L	1 ~ 3
ST30-150	Φ47mm * 1500mm*30	AL-N-AL	2.71m ²	200L	2 ~ 4
ST15-180	Φ58mm * 1800mm*15	AL-N-AL	1.89m ²	150L	1 ~ 2
ST18-180	Φ58mm * 1800mm*18	AL-N-AL	2.27m ²	180L	1 ~ 3
ST21-180	Φ58mm * 1800mm*21	AL-N-AL	2.65m ²	210L	2 ~ 3
ST24-180	Φ58mm * 1800mm*24	AL-N-AL	3.03m ²	240L	2 ~ 4
ST30-180	Φ58mm * 1800mm*30	AL-N-AL	3.80m ²	300L	3 ~ 5

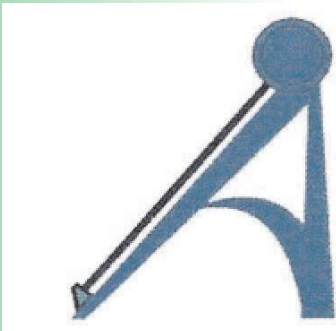
Integrated pressure system: DAC-H



Installed on slope of roof

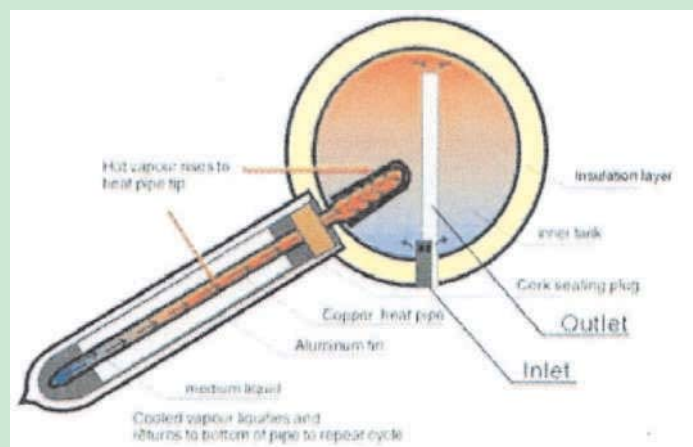


Installed on flat roof



Advantages:

- Highly efficient absorber of high performance with daily average efficiency over 50%;
- Start up quickly, heat pipe transfer the heat energy into the storage tank in one direction.
- Withstand pressure of 6 Bar, can be connected directly with city water.
- No water inside the evacuated tubes; the solar water heater can still in service even with several tubes breakage;
- Highly efficient insulation with polyurethane foam;
- Simple structure, easy to assembly and install, diffuse flat plate reflector can be assembled easily with its module structure;
- Can be used all year round in the cold climate;
- Can be used together with Auxiliary electric boost;
- Long service life, can be used as long as 15 years.



Specifications:

Material of storage tank
 Outer tank: colorful steel, 0.4mm thick
 Inner Tank: crystal liner 4mm, steel 1.5 mm thick
 Insulation Polyurethane foam, 50 mm
 working pressure: 6Bar
 Daily efficiency: ~55% (~42% in winter)
 working temperature :60° C ~ -35° C
 vacuum tube specifications: 58mm*1800mm
 lifetime: 15 years

DAC-H Technical Data

Model Name	Tube Specification	Tube Coating	Absorber Area	Tank Capacity	Persons
DAC-150H	Φ58mm * 1800mm*15	Heat Pipe	1.95m ²	150L	1 ~ 2
DAC-240H	Φ58mm * 1800mm*24	Heat Pipe	3.12m ²	240L	2 ~ 3
DAC-300H	Φ58mm * 1800mm*30	Heat Pipe	3.91m ²	300L	3 ~ 5